

CCBOOTCAMP  
375 N. Stephanie Street  
Bldg. 21, Suite 2111  
Henderson, NV 89014  
Toll Free: 877.654.2243  
Fax: 702.446.0357  
sales@ccbootcamp.com

Authorized Cisco® Training Since 1998  
CCENT® - CCNA® - CCDA® - CCNP® - CCSP® - CCVP® - CCIE®  
www.ccbootcamp.com



# CCBOOTCAMP

A Division of Network Learning, Inc.®

## Approach and Methodology Cisco CCIE Service Provider Certification



[www.ccbootcamp.com](http://www.ccbootcamp.com)

Toll Free 877.654.2243

[sales@ccbootcamp.com](mailto:sales@ccbootcamp.com)

## Table of Contents

<b>TABLE OF CONTENTS.....</b>	<b>1</b>
<b>INTRODUCTION .....</b>	<b>1</b>
<b>REQUIREMENTS FOR CERTIFICATION .....</b>	<b>1</b>
<b>STEP ONE: CCIE SERVICE PROVIDER WRITTEN EXAM.....</b>	<b>1</b>
<b>STEP TWO: CCIE SERVICE PROVIDER LAB EXAM .....</b>	<b>1</b>
<b>CCIE SERVICE PROVIDER LAB EXAM PREPARATION .....</b>	<b>2</b>
<b>CCIE Service Provider Virtual Racks .....</b>	<b>2</b>
<b>CCIE Service Provider Advanced Lab Workbook.....</b>	<b>2</b>
<b>CCIE Service Provider 5-Day Instructor-Led Advanced Lab Boot Camp.....</b>	<b>2</b>
<b>Recommended Approach for the CCIE Service Provider Lab Exam.....</b>	<b>2</b>
<b>APPENDIX A – COMPANY INFORMATION .....</b>	<b>4</b>
<b>About CCBOOTCAMP .....</b>	<b>4</b>
<b>Contact CCBOOTCAMP.....</b>	<b>4</b>
<b>Customer Support Web Sites .....</b>	<b>5</b>
<b>APPENDIX B – ONLINE TRAINING .....</b>	<b>5</b>
<b>Online Training Classroom.....</b>	<b>5</b>
<b>APPENDIX C – TRAINING FLOWCHART .....</b>	<b>7</b>
<b>APPENDIX D – SAMPLE TIMELINE / SCHEDULE PLANNING.....</b>	<b>8</b>
<b>APPENDIX E – PRE-LAB CHECKLIST .....</b>	<b>9</b>

## Introduction

Since 1998, CCBOOTCAMP, a division of Network Learning, Inc., a Cisco Learning Partner, has become the industry leader in developing CCIE training products and services. To date, we have helped over fifteen hundred experts obtain their CCIE certification; view our online Hall of Fame, <http://www.ccbootcamp.com/about-ccbootcamp/ccie-hall-of-fame.html>. This document outlines the CCBOOTCAMP recommended approach toward obtaining your CCIE certification using our proven self-study and instructor-led methods.

## Requirements for Certification

There are no formal prerequisites for CCIE certification, meaning no other professional certifications or training courses are required. To obtain certification, all CCIE candidates must first pass a written qualification exam, and then the corresponding hands-on lab exam. However, candidates are expected to have an in-depth understanding of all topics found in the exam blueprints, and are strongly encouraged to have three- to five-years of job-related experience before attempting the certification process. For additional information, please review the exam preparation materials referenced below.

### Step One: CCIE Service Provider Written Exam

The first step is to pass a two-hour written qualification exam, covering networking concepts and some equipment commands. You must pass the written exam before you are eligible to schedule the lab exam.

- [Written Exam Information](#)
- [Schedule and Pay for Written Exam](#)

### Step Two: CCIE Service Provider Lab Exam

The second step is an intense, eight-hour lab exam, which tests your ability to configure actual equipment to get the network up and running in a timed-test situation. Please note that you must make your first lab attempt within 18 months of passing your written exam, and you must pass the lab within three years of passing the written exam to achieve CCIE certification.

- [Lab Exam Information](#)
- [Schedule and Pay for Lab Exam](#)

## **CCIE Service Provider Lab Exam Preparation**

To assist you in your preparations for the CCIE Service Provider Lab Exam, CCBOOTCAMP offers the following products:

- CCIE Service Provider Virtual Racks
- CCIE Service Provider Home Lab Kits
- CCIE Service Provider Advanced Lab Workbook
- CCIE Service Provider 5-Day Instructor-Led Advanced Lab Boot Camp

### **CCIE Service Provider Virtual Racks**

CCBOOTCAMP has spent over \$6M (Cisco list price) on the most advanced Service Provider training racks in the Cisco training industry. CCBOOTCAMP training racks are loaded with the latest Cisco gear, including (but not limited to): Ten (10) Cisco 2811s running 12.4T, four (4) Cisco Catalyst 3560s running EMI code, one (1) Cisco 3640 with ATM, one (1) Backbone LS1010 connected ATM to backbone Cisco 3640, Frame-relay switch, and a Terminal Server. These virtual racks are used for instructor led classroom training and are also available for remote rack rental. Enrollment in the Service Provider program includes rack sessions each lasting eight hours in duration.

### **CCIE Service Provider Advanced Lab Workbook**

The Advanced Lab Workbook contains five complete lab scenario simulations and one bonus lab. These lab scenarios are sometimes considered more difficult than the actual CCIE Lab Exam itself! Each scenario is a comprehensive mock lab, containing a variety of technologies. With each scenario, a complete walk-through and the solution are included. Each scenario is a step-by-step, brick-by-brick analysis of the many techniques and approaches required to solve the mock lab scenario. If you can only purchase one item from CCBOOTCAMP to help you prepare for the CCIE Lab Exam, make sure to purchase the CCIE Service Provider Advanced Lab Workbook.

### **CCIE Service Provider 5-Day Instructor-Led Advanced Lab Boot Camp**

The CCIE Service Provider 5-Day Instructor-Led Advanced Lab Boot Camp is for the student in the final stages of preparation to take their CCIE Lab Exam. The advanced lab boot camp is a highly advanced class designed for ultimate CCIE student preparation. CCIE Service Provider Advanced Lab Boot Camps are where CCBOOTCAMP students focus on the integration of core topics along with other advanced technologies. The instructor-led advanced lab boot camp is geared towards CCIE candidates who already have a strong, in-depth understanding of the inter-workings of the required core service provider topics. Students should be able to easily complete technology focused labs, advanced technology labs, and have their lab exam scheduled within 30 to 45 days of the advanced lab boot camp. CCIE Service Provider Advanced Lab Boot Camps are taught from 9am - 8pm Monday through Thursday and 9am - 5pm on Friday at a variety of locations, and are also available for access via WebEx; CCBOOTCAMP's online training classroom.

### **Recommended Approach for the CCIE Service Provider Lab Exam**

In preparation for taking the CCIE Service Provider Lab Exam, CCBOOTCAMP recommends spending one- to two-months focusing on building a strong foundation and understanding of core service provider technologies.

Once the service provider technologies are completely understood, focus should be placed on interaction between the technologies. The best way to practice is by completing the CCIE Service Provider Advanced Lab Workbook. This process typically takes two- to three-months. Once the advanced topics and integration of technologies have been mastered, shift focus to concentrate on specific lab exam items, such as speed, exam approach, and recognizing "gotchas."

At this point, CCBOOTCAMP recommends attending the CCIE Service Provider Instructor-Led Advanced Lab Boot Camp, which covers advanced technologies, exam approach, and recognizing gotchas at an intricate level. Attending the advanced lab boot camp should solidify the knowledge required to pass the CCIE Service Provider Lab Exam.

## Appendix A – Company Information

### About CCBOOTCAMP

In 1998, Network Learning, Inc. began with a vision to develop smarter, more advanced products and services for the Cisco training community. Since our humble beginnings, Network Learning, Inc. has grown into a leading Cisco Learning Partner with several dedicated single, dual, triple and quad CCIE instructors who lead our classes, author our workbooks, develop our labs, support our products, and most importantly, who give our customers the knowledge and skills they need to succeed in today's rapidly evolving networked business world.

Through our specialized Cisco Certification training division, CCBOOTCAMP, we are known for effectively raising the level of integrity, commitment, skill and knowledge with Cisco Certified experts worldwide. No other training company in the world has a higher level of personalized instruction to help you succeed than Network Learning, Inc. Our quality of service and support speaks for itself. Just ask our previously certified customers.

Our state of the art facility houses the finest equipment in the Cisco training industry. We have spent over \$6M (Cisco list price) to date building the most advanced training racks for our students to utilize. We have 16 full CCIE Routing and Switching racks that contain the following: 10 Cisco 2811s running 12.4T, 4 Cisco Catalyst 3560s running EMI code, Frame-relay switch, and Terminal Server. We have 16 full Security racks that contain the following: 10 Cisco 2811s running 12.4T Adv Enterprise Services, 4 Cisco Catalyst 3560s running 12.2, Cisco 4235 IPS Sensor running 6.x, 2 Cisco ASA-5510s running 8.x, ACS/CA Server running 4.x, Frame-relay switch, Terminal Server, and Test PC. We have 16 full Service Provider racks that contain the following: 10 Cisco 2811s running 12.4T, 4 Cisco Catalyst 3560s running EMI code, 1 Cisco 3640 with ATM, 1 Backbone LS1010 connected ATM to backbone Cisco 3640, Frame-relay switch, and Terminal Server. We have 16 full Voice racks that contain the following: 3 Cisco 2811s running 12.4T (HQ, Branch 1, Branch 2), 1 Cisco 2811 for PSTN/WAN cloud, 1 Catalyst 3750G 12.2.x, 7 Cisco 7960G IP Phones, 1 Server with Unified Communications Manager 7.0 Pub, 1 Server with Unified Communications Manager 7.0 Subscriber, 1 Server with Unity Connection 7.0, 1 Server with Presence 7.0, 1 Server with CallCenter 7.0, and 1 NM-CUE (Cisco Unity Express Network Module).

No other training company in the world offers this level of training equipment to their customers.

Because we own and operate our training facility and equipment, we are able to support and scale class sizes from a minimum of two (2) students, to a maximum of ten (10) students for our CCIE boot camp classes, to ensure each student receives ample one-on-one instruction from our CCIE certified trainers. We also provide each individual student their own gear to work with. Our students do not share gear, regardless of which level course they are enrolled in.

Headquartered in the United States in Henderson, Nevada, we offer certification classes and boot camps at remote locations all around the globe, with the majority of our classes held at our state of the art facility, less than six miles from Las Vegas McCarran International Airport. For additional information, visit us at [www.ccbootcamp.com](http://www.ccbootcamp.com).

### Contact CCBOOTCAMP

CCBOOTCAMP

375 N. Stephanie Street  
Building 21, Suite 2111  
Henderson, NV 89014

Toll Free: 877.NLI.CCIE  
Phone: 702.968.5100  
Fax: 702.446.0357  
Website: <http://www.ccbootcamp.com>  
Email: [sales@ccbootcamp.com](mailto:sales@ccbootcamp.com)

### **Customer Support Web Sites**

<http://www.routerie.com> (Routing and Switching / Service Provider)

<http://www.securityie.com> (Security)

<http://www.voiceie.com> (Voice)

## **Appendix B – Online Training**

### **Online Training Classroom**

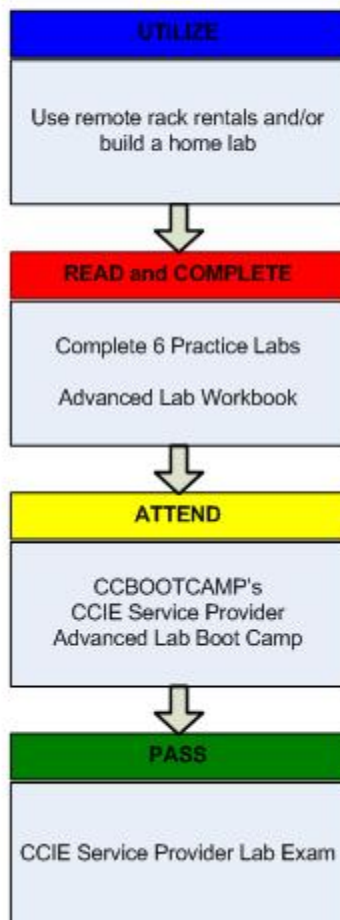
While CCBOOTCAMP prefers that students attend our boot camps in person at one of our facilities, we can accommodate those who cannot be physically present via WebEx; CCBOOTCAMP's online classroom. CCBOOTCAMP utilizes state of the art technology to provide online classrooms for remote training of



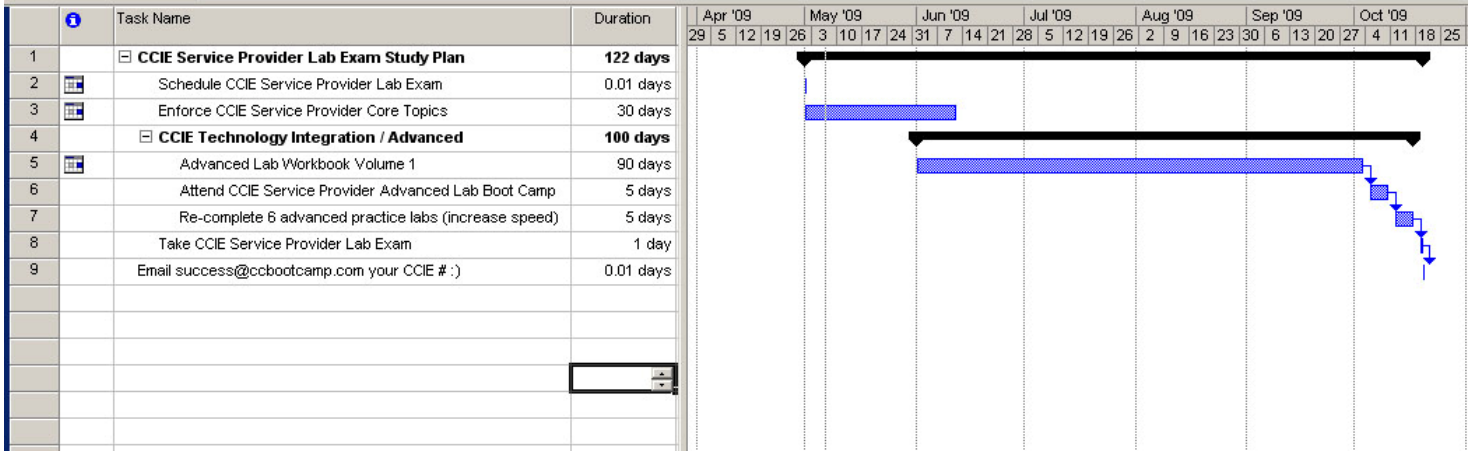
students around the globe. Our online classrooms provide audio, direct messaging, whiteboard, and shared applications via desktop interaction with our live boot camp instructor. If you would like a demonstration of our online classroom configuration, please email us at: [sales@ccbootcamp.com](mailto:sales@ccbootcamp.com).

## Appendix C – Training Flowchart

### CCBOOTCAMP's Approach and Methodology for the CCIE Service Provider Lab Exam



## Appendix D – Sample Timeline / Schedule Planning



## Appendix E – Pre-Lab Checklist

- Remove all possible work/life variables from your mind and your schedule to increase your chances, and to ensure you are physically and mentally ready for your exam!
- Arrive at the testing city/location at least one day prior to your scheduled exam. If your time zone is plus/minus more than six hours difference from the time zone of the Cisco office where you will be taking your exam, plan on arriving at least two days prior to the exam to adjust your body to the local time.
- Drive to the facility where your lab exam will be held in advance to be certain you know how long it will take you to get to the testing location on the day of your exam.
- Find a good, reliable place to eat breakfast near the testing facility.
- The night before your exam, be sure to eat a healthy dinner consisting of protein and complex carbohydrates. Stay away from greasy, fatty, and sugary foods. Also, if you want to eat meat, try to eat chicken or fish, though avoid red meat as it takes your body longer to digest.
- Get a good night's rest. Do not stay up the entire night trying to cram or study last minute materials. Do not take any type of sleep aid that could still be in your system the following day.
- Wake up at least ninety minutes before your exam start time. Shower, get dressed, and go eat breakfast.
- At breakfast, eat only healthy foods. No greasy, fatty, or sugary items should be consumed. Eat fruits, vegetables, oatmeal, etc.
- Arrive at the testing facility at least fifteen minutes prior to your scheduled exam time.
- Relax, breathe, focus, and trust your instincts.

**Good Luck!**